



Bone Clones, Inc.

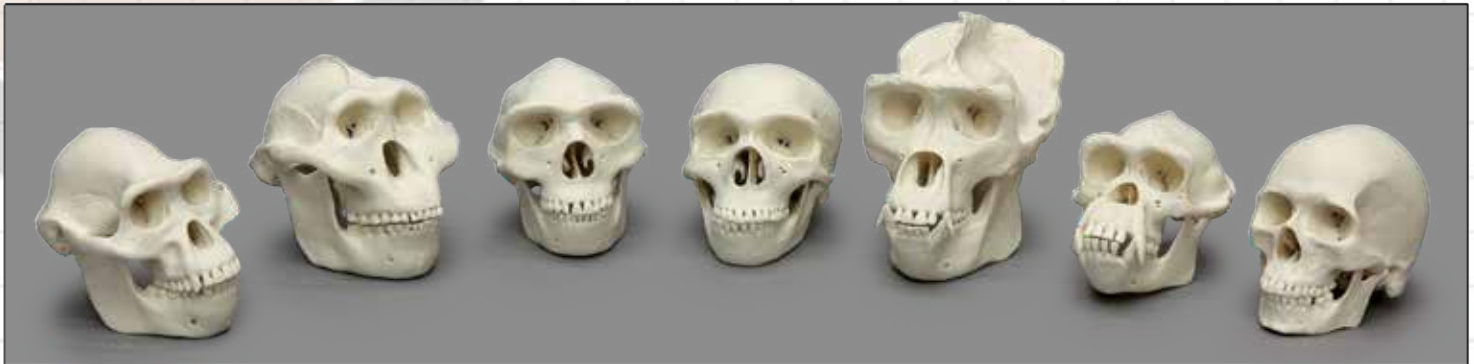
OSTEOLOGICAL REPRODUCTIONS

Phone: (800) 709-7991 USA: 1-800-914-0091

www.boneclones.com



SCIENCES - BIOLOGY - COMPARATIVE STUDY SETS & SERIES



KAM-SET-7

Primate Half-Scale Series (Also Available Individually)

A. afarensis *A. boisei* *H. erectus* *H. neanderthalensis* Gorilla Chimpanzee Modern Human



KF-001

Set of 10 Primate Femurs

Child • Adult • Human • *H. ergaster* • "Lucy" • Bonobo
Baboon • Siamang • Chimpanzee • Orangutan • Gorilla



SC-092-PAF-SET

Human Adult Male
Pelvis and Femora



BH-KRO-1

Set of 9 Fossil
Hominid Skulls



BC-099E
Black Bear

BC-131E
Domestic Cat

BC-142E
Raccoon

BC-100E
Doe Deer

BC-144E
Gray Fox

**Economy North
American Mammals**

BC-146E
Bobcat

BC-143E
Coyote

BC-101E
American Beaver

BC-158E
Ringtail

All photographs © Bone Clones, Inc.



Bone Clones, Inc.

OSTEOLOGICAL REPRODUCTIONS
Phone: (800) 709-7991 USA: 1-800-914-0091
www.boneclones.com



SCIENCES - BIOLOGY - COMPARATIVE STUDY


Human Bone Boxes



Our Bone Boxes provide an economical alternative to the purchase of an entire skeleton or half skeleton.

We offer **Child, Female, and Male** Bone Boxes. Each collection includes long bones, the fifth rib, key vertebrae, rigidly articulated hand and foot, hyoid, clavicle, scapula, sternum plate, innominate, sacrum, coccyx and patella and an exceptionally detailed skull featuring a removable calvarium and spring hinged jaw.

This set is detailed enough to offer an excellent model for teaching introductory anatomy to medical, dental, nursing, and undergraduate anatomy students. With the diminished availability of natural bone skeletons, Bone Clones products are increasingly used in advanced anatomical and osteological instruction.

(Carrying Case S-82 Included) 

Comp-110-F Female Bone Box (shown)

Forensics Sets



An introductory forensic anthropology set, also applicable to a broad range of concepts in biological anthropology, biomechanics, and comparative anatomy. Students can learn to create a "biological profile" from selected skeletal remains.

Included:

5 Skulls of different ancestry (1 with gunshot wound), Male & Female: Femur, Humerus and Pelvis, and Rib with Embedded Bullet.

10 page lesson plan on basic methods of skeletal identification, with detailed tables on sex determination, ancestry assessment, age estimation, stature assessment, and a descriptive analysis of gunshot wound trauma.

1 Page Human Skeletal Features handout which defines skeletal directional terminology and outlines important skeletal features in the human skeleton.

Comp-114 Forensic Osteology Set

Comparative Sets

Comp-101	Economy Human Male Asian Set: Skull, Pelvis, Femur, Humerus
Comp-102	Economy Female Asian Set: Skull, Pelvis, Femur, Humerus
Comp-103	Economy 5-year-old Child Set: Skull, Pelvis, Femur, Humerus
FO-105-P	Comparative Lumbar (L-3) Vertebra Set of 2 (Arthritic and Normal)
Comp-105	Human Maxillae, set of 3: African, Asian, European
Comp-106	Human Child, 5-year-old Modern & Archaic Comp Set: Pelvis, Femur, Humerus
Comp-120-SET	Human Male and Female Skulls: African, Asian, and European
Comp-112	Economy African-American Female Set: Skull, Pelvis, Femur, Humerus
Comp-113	Economy Asian Male Set: Skull, Pelvis, Femur, Humerus
SC-028-IM	Gorilla Intermembral Set
Comp-115	Bone Scaling Femur Set
Comp-M-405-SET	Economy Male European Set: Skull, Pelvis, Femur, Humerus
Comp-M-406-SET	Economy Female European Set: Skull, Pelvis, Femur, Humerus
Comp-M-407-SET	Human Male European Set: Radius, Ulna, Tibia, Fibula