



Bone Clones, Inc.

OSTEOLOGICAL REPRODUCTIONS

Phone: 818-709-7991 USA: 1-800-914-0091

www.boneclones.com



PHYSICAL ANTHROPOLOGY

OSTEOLOGY & LOCOMOTION



KO-303-A

KO-304-A

P. troglodytes



KO-087

H. neanderthalensis



KO-242

H. habilis



SC-039-184-A

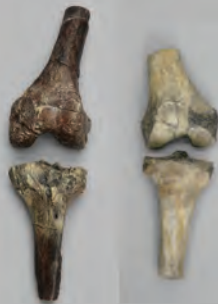
A. ramidus



SC-039-185-A



KO-390-4MT
4th
Metatarsals



KO-336 *H. sapiens*
KO-211-KJ *H. erectus*
KO-392-KJ *A. afarensis*



SC-012-PF
H. ergaster



KO-036-PF
A. afarensis



SC-069-IM
C. pygerythrus



BCH-808
Syphilis



KOH-443
Rickets



BH-039
A. ramidus



BH-045
H. sapiens idaltu



BCM-891
H. sapiens
European Female

All photographs © Bone Clones, Inc.



Bone Clones, Inc.

OSTEOLOGICAL REPRODUCTIONS

Phone: (818) 709-7991 USA: 1-800-914-0091

www.boneclones.com



Bone Clones, Inc.
Homepage

PHYSICAL ANTHROPOLOGY

We produce skulls, skeletons and individual bones from non-human primate species, human (with examples of sex, age & ancestry) and hominid specimens.

Per our customers' requests, we have recently added specimens with a focus on locomotion or pathology, including joints, arm articulations, intermembral sets and a collection of osteological pathology specimens.

Hands & Feet (articulated rigid except where noted)

H-02-M	Human Hand, adult male	F-02-M	Human Foot, adult male
KO-184	Human Hand, 5-year-old child	KO-185	Human Foot, 5-year-old child
KO-124-A	Bonobo Hand	KO-125-A	Bonobo Foot
KO-149-A	Siamang Hand	KO-148-A	Siamang Foot
KO-303-A	Male Chimpanzee Hand	KO-304-A	Male Chimpanzee Foot
KO-208-A	Gorilla Hand	KO-209-A	Gorilla Foot
KO-202-A	Male Sumatra Orangutan Hand	KO-204-A	Male Sumatra Orangutan Foot
SC-039-184-A	<i>A.ramidus</i> Hand, articulated	SC-039-185-A	<i>A.ramidus</i> Foot, articulated
SC-069-184-A	Vervet Hand	SC-069-185-A	Vervet Foot
SC-265-184-A	Black Spider Monkey Hand	SC-265-185-A	Black Spider Monkey Foot
		KO-242	<i>H.habilis</i> OH 8 Foot

Primate, Hominid Pelvis & Femur Sets

KO-210-PF	Baboon	SC-002-PF	Orangutan
SC-003-PF	Chimpanzee	SC-028-PF	Gorilla
SC-047-PF	Siamang	SC-069-PF	Vervet
SC-123-PF	Bonobo	SC-137-PF	Rhesus Macaque
SC-263-PF	Weeping Capuchin	SC-265-PF	Black Spider Monkey
KO-036-PF	<i>A.afarensis</i> "Lucy" set of 5 bones- 1/2 pelvis, femur, sacrum		
KO-036-FA	<i>A.afarensis</i> "Lucy" Femur, assembled		
KO-036-PA	<i>A.afarensis</i> "Lucy" Pelvis, articulated		
KO-211-PR	<i>H.erectus</i> KNM-ER 1481 Femur and partial Tibia		
KO-136-SET	<i>A.anamensis</i> Kanapoi Hominid (KNM-KP 271) set of 8 bones		

Hominid & Primate Articulated Skeletons (See website for additional Human Skeleton listings)

SC-012-A	<i>H.ergaster</i> - KNM-WT-15000 "Nariokotome boy"
SC-036-A	<i>A.afarensis</i> "Lucy"
SC-019-A	<i>H.neanderthalensis</i> Neanderthal
SC-047-A	Siamang
SC-003-A	Male Chimpanzee
SC-002-A	Male Sumatra Orangutan
SC-028-A	Gorilla
SC-069-A	Vervet
SC-123-A	Bonobo
SC-010-A	Mandrill Baboon
SC-263-A	Weeping Capuchin
SC-137-A	Rhesus Macaque
SC-183-A	Human Child 5-year-old
SC-301-A	Human Adolescent
SC-092-A	Human Asian Male
SC-211-A	Human Asian Female
SCM-191-A	Human European Female
SCM-192-A	Human Asian Male